

Temperature °Controls Pty Ltd

ACN: 075 298 592

ABN: 966 501 901 83

Sydney (Head Office): 7 Yamma St, Sefton, NSW 2162 Australia

Melbourne: 8/280 Whitehall St, Yarraville VIC 3013 Australia

Brisbane: 36/121 – 125 Kerry Rd, Archerfield, QLD 4108 Australia

W: www.temperature.com.au

Ph: 61 2 9721 8644

Fax: 61 2 9738 9339

Ph: 61 3 9687 0000

Fax: 61 3 9687 1900

Ph: 61 7 3373 8424

Fax: 61 7 3821 3693

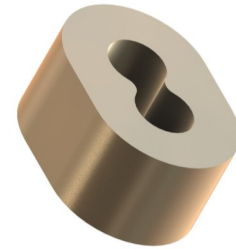
E: sales@temperature.com.au



CRIMP-JUNCTION

APPLICATION

Thermocouple wire can be fabricated into accurate and dependable temperature sensors by joining the thermo elements at the sensing end utilizing the "Crimp-Junction". Made of pure nickel, the "Crimp-Junction" offers a convenient method for fabricating thermocouples at the point of use. Two sizes, 24-gage and 20-gage, are available in order to accommodate the most utilized wire sizes. The Crimp-Tool has the capability to form either size.



Thermo elements are inserted into crimp-junction.

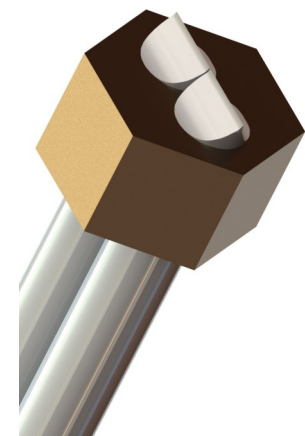
CRIMP-JUNCTION 24/30 GAGE	ORDER CODE: TCQT128540
HEX SIZE AFTER CRIMP 1/16"	

CRIMP-JUNCTION 20 GAGE	ORDER CODE: TCQT128543
HEX SIZE AFTER CRIMP 3/32"	



Actual Size before and after crimping for 20-GAGE Crimp-Junction

CRIMP-JUNCTION-TOOL 1252	ORDER CODE: TCMACRIMPT
---------------------------------	---



Thermo elements are joined to form the "hot" junction by utilizing the "Crimp Junction" and crimp tool.