

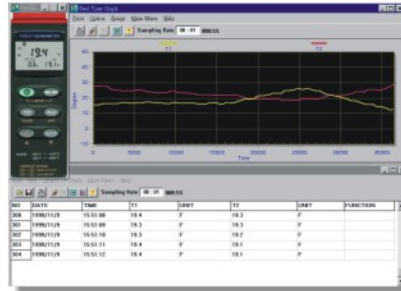
The Comparison Table of 300 Series Thermometers

● **WINDOWS BASED SOFTWARE INTERFACE**

Main Control Window



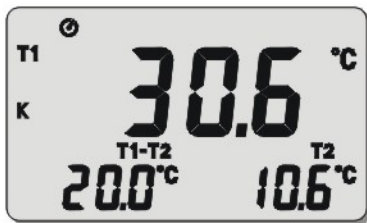
Real Time Graphic Window



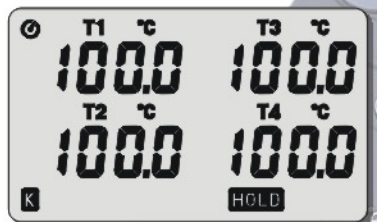
Data List Window



● **LCD DISPLAY:**



Triple Display
(305/306)



Four Channel Display
(304/309)

SOFTWARE
Thermolink/Thermolog/TestLink SE-309



Offset Adjustment

RS-232 Interface

External Power

FUNCTION TABLE

MODEL	CENTER 300	CENTER 301	CENTER 302	CENTER 303	CENTER 304	CENTER 305	CENTER 306	CENTER 307	CENTER 308	CENTER 309
Input Channel	Single	Dual	Single	Dual	Four	Single	Dual	Single	Dual	Four
K Type Sensor	•	•	•	•	•	•	•	•	•	•
J Type Sensor			•	•						
RS-232 Interface	•	•	•	•	•	•	•			•
Software	Option	Option	Option	Option	Option	•	•			•
Data Logger						•	•			•
REL Function	•	•	•	•	•	•	•	•	•	
CLOCK Function						•	•			•
TIMER Function	•		•							
HOLD Function	•	•	•	•	•	•	•	•	•	•
MAX/MIN Function	•	•	•	•	•	•	•	•	•	•
Auto Power Off	•	•	•	•	•	•	•	•	•	•

CENTER 300/301/302/303 Thermometer

This series of thermal couple thermometers are micro controller based testers. With very intuitive interface, the user can fully operate the tester without second thought. Some of the units (302 303) are digitally calibrated for long time stability. The whole series are equipped with RS232 interface for advance applications.



FEATURES:

- Timer Function (300, 302)
- Dual Input (301, 303)
- Dual Display (301, 303)
- RS232 interface
- Auto Power OFF
- Resolution 0.1°C, 0.1°F

SPECIFICATIONS

Range	K type: -200 ~ 1370°C; -200 ~ 2498°F (300 ~ 303) J type: -200 ~ 760°C; -200 ~ 1400°F (302, 303)
Accuracy	±0.1%+0.7°C, ±0.1%+1.4°F
Resolution	0.1°C; 0.1°F
Operation Temp	0°C ~ 50°C (< 80%RH)
Storage Temp	-20°C ~ 60°C (< 70%RH)
Battery	9V battery
Dimensions	184x64x30 mm
Weight	Approx. 210g

STANDARD ACCESSORIES

Model	Battery	Operation Manual	Carrying Case	K Type bead sensor	RS-232 cable	Software
CENTER300	●	●	●	TP-K01 X 1PC	Option	Option
CENTER301	●	●	●	TP-K01 X 2PCS		
CENTER302	●	●	●	TP-K01 X 1PC		
CENTER303	●	●	●	TP-K01 X 2PCS		



300/301 K TYPE

302/303 K.J TYPE



CENTER 307/308 Compact Size Thermometer

CENTER 307/308 thermometers are compact size low cost units. It will fulfill the need for most of every day applications. Even though this seems to be an entry level unit, the measuring range is till as wide as the sensor can provide with sufficient accuracy for applications.



FEATURES:

- Mini Size
- Dual Input (308)
- Dual Display (308)
- Auto Power OFF
- Time Display

SPECIFICATIONS

Range	-200 ~ 1370°C; -328 ~ 2498°F
Accuracy	±0.3%+1°C, ±0.3%+2°F
Input Protection	60V DC or 24Vrms AC Maximum
Resolution	0.1°C; 0.1°F
Operation Temp	0°C ~ 40°C (< 80%RH)
Storage Temp	-10°C ~ 60°C (< 70%RH)
Battery	9V battery
Dimensions	164x54x34 mm
Weight	Approx. 200g

STANDARD ACCESSORIES

Model	Battery	Operation Manual	K Type bead sensor
CENTER307	●	●	TP-K01 X 1PC
CENTER308	●	●	TP-K01 X 2PCS



CENTER 305/306 Datalogger Thermometer



These data loggers are designed for advanced applications which require the temperature data for a period. With CENTER 305 or 306, the user can collect the information very easily. The operating interface is designed in a very intuitive way so that the user can locate the function by just look at the panel. The build in real time clock will give every set of recording data a time stamp so that every data can be traced back to the time it occurred. The bundled window software is not only used to read the recording data but it provides a virtual panel in the window to fully control the tester.

FEATURES:

- Dual Input (306)
- Triple Display
- Time Function
- RS232 Interface
- With Windows Software
- 16,000 Records Data logger (306)
- Resolution 0.1°C, 0.1°F



SPECIFICATIONS

Range	K type: -200 ~ 1370°C; -328 ~ 2498°F
Accuracy	±0.3%+1°C, ±0.3%+2°F
Resolution	0.1°C; 0.1°F
Operation Temp	0°C ~ 50°C (< 80%RH)
Storage Temp	-20°C ~ 60°C (< 70%RH)
Battery	9V battery
Dimensions	184x64x30 mm
Weight	Approx. 210g

STANDARD ACCESSORIES

Model	Battery	Operation Manual	Carrying Case	K Type bead sensor	RS-232 Cable	Software
CENTER305	•	•	•	TP-K01 X 1PC	•	•
CENTER306	•	•	•	TP-K01 X 2PCS	•	•



CENTER 304/309 Four Channels Thermometer

309 DATALOGGER

304 K TYPE



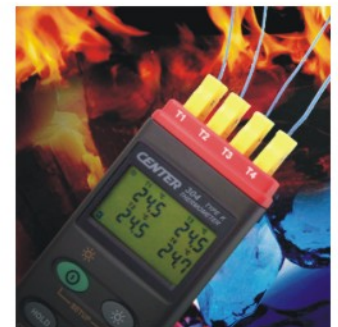
LED Back Light



In some applications, the temperature is concerned at more than two points. This is why we provide the four channel model thermometer 304 and 309. The operation interface is intuitive and all the temperature data are shown on the LCD at the same time so that no extra step for the user to get the reading.

FEATURES:

- Auto Range
- Four Channel Input
- Four Channel Display
- Wide Measuring Range (304)
- With Windows Software (309)
- RS-232 Interface
- 16,000 Records Data Logger each channel (309)
- Resolution 0.1°C, 0.1°F



SPECIFICATIONS

Range	K type: -200 ~ 1370°C; -328 ~ 2498°F
Accuracy	±0.3%+1°C, ±0.3%+2°F
Resolution	0.1°C; 0.1°F
Input Protection	60V DC or 24Vrms AC Maximum
Operation Temp	0°C ~ 50°C (< 80%RH)
Storage Temp	-20°C ~ 60°C (< 70%RH)
Battery	9V battery
Dimensions	184x64x30 mm
Weight	Approx. 220g

STANDARD ACCESSORIES

Model	Battery	Operation Manual	Carrying Case	Temperature Probe	RS-232 Cable	Software
CENTER304	•	•	•	TP-K01 X 2PCS	Option	Option
CENTER309	•	•	•	TP-K01 X 2PCS	•	•

