



Integrity in Temperature Calibration

FAST-CAL for **INDUSTRY**

TEMPERATURE CALIBRATION

FAST

ISOTECH

www.isotech.co.uk

4 PRODUCTS

3 TEMPERATURE RANGES
-35°C TO 650°C

1 SUPPLIER - ISOTECH



Before you buy elsewhere check...

SENSITIVITY TO AMBIENT TEMPERATURE !

For example one competitors block bath changes calibration by 0.8°C if you take the block bath outside from 20°C to 4°C !

We measured one of our block baths. It was less than 0.03°C change from 20 to 0°C with the sides of the block bath removed !

FAST-CAL

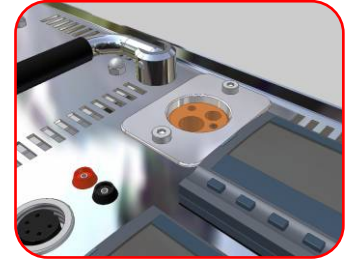
Fast-Cal - the product range you designed !

During early 2004 twenty experienced engineers from many parts of the world were asked to produce their ideal specification for industrial calibration. Their top ten requirements, in order of priority, are listed below.

1. Rugged
2. Light weight
3. Easy to use on site
4. Low cost / high benefit ratio
5. Fast response, high stability
6. Time saving features
7. Multiple sensor testing
8. Software
9. Modern design
10. Compliant with the latest regulations.

They told us "Whatever you do don't use membrane keypads. They look great new, but after a year of being poked with ball point pens and screwdrivers the results have to be seen to be believed." We were going to include a picture but we might upset the competition.

The result is the range of Fast-Cal products.



Fast-Cal Features:

- Rugged, hard wearing stainless steel case.
- Hygienic with no paint to chip or flake.
- No membrane keypads.
- Lightweight, between 6.35 and 6.60 kg depending upon the model.
- Easy to use on site. A soft, light weight shoulder case makes transporting the Fast-Cal effortless.
- Fast response, high stability. Isotech has put 24 years of manufacturing and design experience into optimising the performance of the Fast-Cal. Compare the specifications overleaf. The block gradients are minimised by non-linear heating and cooling profiles to compensate for end losses to ambient temperature.
- The Fast-Cals are so easy to use you hardly need the manual.
- The Medium and High Fast-Cals incorporate a built-in Insert holder for ultra fast changes and re-starts of calibration cycles.
- The Fast-Cals (excepting the 2010) all have the same sized removable inserts which can be drilled to your exact requirements. A standard insert is included, see the sketch on the side bar.
- Benefit from the PC interface. Extra software is available for automatic calibration.
- The Fast-Cal design is modern and complies with all the relevant requirements and directives which are applicable.
- The Fast-Cals come with a certificate traceable to National Standards. Five point UKAS Certification is also available.
- Mains power variance immunity has been standard on all Isotech dry block calibrators since their conception. This feature resolves problems with fluctuating power supplies which if not acknowledged causes instability in the bath.



Rugged Product



Light Weight



Portable Unit



Easy to Use



Fast Response



High Stability

SECRETS OF SUCCESS.

The key secret of Isotech's success is knowledge. By applying our insight from the manufacture of National, Primary and Secondary laboratory apparatus to the Industrial Fast-Cal you get the full benefit of our experience.

FAST-CAL SPECIFICATIONS

HTM 2010	LOW	MEDIUM	HIGH
-35 to +140°C	-35 to +140°C	30 to 350°C	35 to 650°C
0.02°C	0.02°C	0.03°C	0.03 to 0.05°C
±0.2°C	±0.2°C	±0.3°C	±1°C (500°C) ±2°C (650°C)
±0.15°C	±0.15°C	±0.2°C	±0.5°C
-30 to +140°C	-30 to +140°C	50 to 350°C	50 to 650°C
In 15 minutes	In 15 minutes	In 15 minutes	In 20 minutes
+140 to 0°C	+140 to 0°C	350 to 100°C	650 to 300°C
In 15 minutes	In 15 minutes	In 40 minutes	In 20 minutes
145mm depth	148mm depth	148mm depth	148mm depth
8Ø, 6.5Ø, 3 X 4.5Ø	25mm Ø	25mm Ø	25mm Ø
150W	150W	750W	750W
Included	Included	Included	Included
Extra	Extra	Extra	Extra
Included	Included	Included	Included
Included	Included	Included	Included
Complete Models	Complete Models	Complete Models	Complete Models
Complete Model with Software	Complete Model with Software	Complete Model with Software	Complete Model with Software
Yes with Software	Yes with Software	Yes with Software	Yes with Software
228 x 248 x 143mm	228 x 248 x 143mm	228 x 248 x 143mm	228 x 248 x 143mm
6.60kg	6.60kg	6.35kg	6.35kg

* When used with a suitable Isotech Semi Standard PRT.

SOFTWARE

CalNotePad: Included as standard.

This permits you to connect both an indicator and the calibration bath to the PC. You can view data on clear configurable chart displays, log data to file and control the calibration bath.

I-cal: A software application that can automatically calibrate up to 16 temperature sensors. It provides an expandable low cost route to automatic calibration – with I-cal Capture you can store pictures (along with time and temperature data) to enable, for example, dial thermometers to be calibrated automatically; return to a set of images of the dial captured at each calibration temperature!

Visit our web-site...
www.isotech.co.uk

Model

Range at 20°C

Stability

Accuracy - Basic

Accuracy - Complete*

Heating Time

Cooling Time

Calibration Capacity

Power

Traceable Certificate

UKAS Certificate

PC Communications

Software

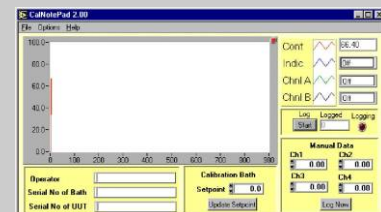
4-20mA Input

Thermal Switch Test

Ramps and Dwells

Dimensions

Weight

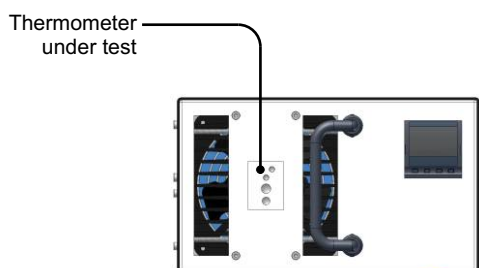


BASIC OR COMPLETE EXPLAINED

FAST-CALS ARE AVAILABLE IN BASIC OR COMPLETE MODELS

A BASIC DRY BLOCK CALIBRATOR

The thermometer under test is compared to the dry block controller value. Useful for moderate temperature ranges and quick testing.

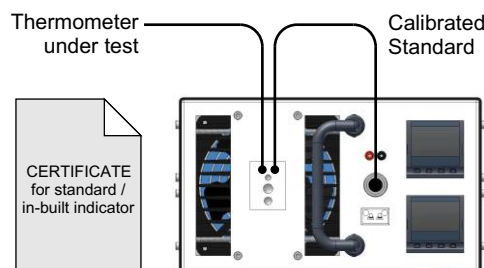


BASIC

AN ISO 9000 CALIBRATION SYSTEM

A thermometer under test is compared to a calibrated standard, for true traceability and clearly meets the requirements of ISO9000.

Complete models include a semi-standard probe. See order form for details.



COMPLETE

FAST-CAL Inserts

Fixed Block 2010
Model HTM2010 has a fixed block optimised for Hospital Validation Systems.



Ø8.0mm x 145mm deep
Ø6.5mm x 145mm deep
Ø4.5mm x 145mm deep
Ø4.5mm x 145mm deep
Ø4.5mm x 145mm deep

Standard Insert Low, Medium, High
Ø8.0mm x 140mm deep
Ø6.5mm x 140mm deep
Ø4.5mm x 140mm deep
Ø4.5mm x 140mm deep
M4 Extraction Hole



Blank Insert Low, Medium, High
Insert without pockets for local machining

Special Insert Low, Medium, High
Contact Isotech with your requirements

contactus

Isothermal Technology Limited, Pine Grove, Southport, Merseyside, PR9 9AG, England
 telephone **+44 (0) 1704 543830** facsimile **+44 (0) 1704 544799**
 email **info@isotech.co.uk** website **www.isotech.co.uk**

If you require more information or a quote for one of the FAST-CAL range please tick the relevant boxes below and fax to Isotech.

LOW	2010	MEDIUM	HIGH
<input type="checkbox"/> Basic Calibrator	<input type="checkbox"/> Basic Calibrator	<input type="checkbox"/> Basic Calibrator	<input type="checkbox"/> Basic Calibrator
<input type="checkbox"/> Complete Calibrator	<input type="checkbox"/> Complete Calibrator	<input type="checkbox"/> Complete Calibrator	<input type="checkbox"/> Complete Calibrator
<input type="checkbox"/> UKAS Calibration	<input type="checkbox"/> UKAS Calibration	<input type="checkbox"/> UKAS Calibration	<input type="checkbox"/> UKAS Calibration
<input type="checkbox"/> Semi-Standard Probe	<input type="checkbox"/> Semi-Standard Probe	<input type="checkbox"/> Semi-Standard Probe	<input type="checkbox"/> Semi-Standard Probe
<input type="checkbox"/> Carry Case	<input type="checkbox"/> Carry Case	<input type="checkbox"/> Carry Case	<input type="checkbox"/> Carry Case
<input type="checkbox"/> Blank Insert		<input type="checkbox"/> Blank Insert	<input type="checkbox"/> Blank Insert
<input type="checkbox"/> Special Insert		<input type="checkbox"/> Special Insert	<input type="checkbox"/> Special Insert

If you require any of our databooks please tick the relevant box below or visit our website at www.isotech.co.uk

<input type="checkbox"/>	<input type="checkbox"/>	<input type="checkbox"/>	<input type="checkbox"/>	<input type="checkbox"/>
databook one Realizing ITS-90	databook two Secondary Laboratory Equipment	databook three Industrial Laboratory Equipment	databook four Blackbody and Thermocouple Referencing	databook five Calibration Services and Information

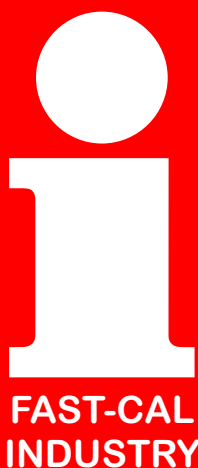
OTHER PRODUCTS:

Isothermal Technology Limited can supply Indicators, Thermocouples and Platinum Thermometers for your most exacting needs and we offer the widest range of calibration equipment in the world. We also offer training courses and have technical articles to help you. A visit to our web-site is well worth while. If in doubt why not phone us.



Isotech is always willing to give technical advice and assistance where appropriate. This publication is for information only. Because of the program of continual development and improvement we reserve the right to amend or alter characteristics without prior notice.

FAX +44 (0) 1704 544799



NAME	POSITION
COMPANY	
ADDRESS	
TELEPHONE NUMBER	POSTCODE
FACSIMILE NUMBER	EMAIL